

Shell material

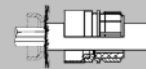
Machined components: Copper-Zinc alloy (CuZn)
 die cast components: Zinc (GD-Zn)
 Shell plating: Nickel (Ni) plated
 Cable entry: max. 18 mm



Insulator

Connector inserts: Polyamide (PA66) UL 94 V0

All connectors with different shielding material for different jacket and shield diameters.



Contacts

Contact material: Copper-Zinc alloy (CuZn)
 Contact plating: Nickel (Ni) with gold (Au) passivated
 Contact termination: crimp type, solder cup, DIP solder

Sealing

Sealing rings: Fluor rubber FPM
 Gaskets: Perbunan NBR or FPM



Temperature

Temperature (long term) Celsius: - 40 °C up to + 125°C
 Temperature (long term) Fahrenheit: - 40 °F up to + 257 °F

Mating

Mating cycles: Standard min. 50
 Female coupling nuts: M27 screw locking
 Male receptacles: M27 screw locking



Protection



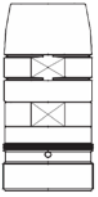
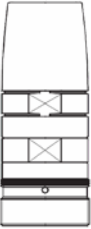
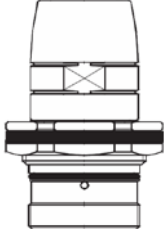
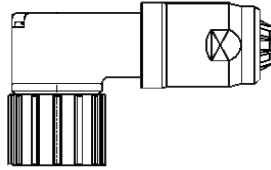
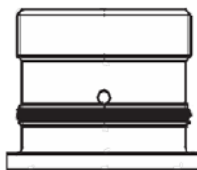
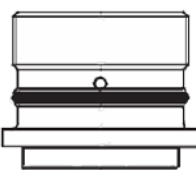

Protection class : IP 67 (mated) depends on which cable gland is used

EMC
shielding



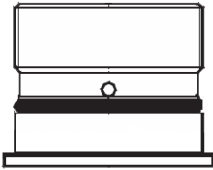
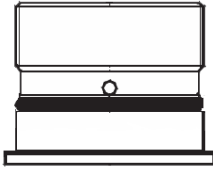
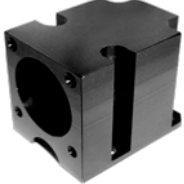
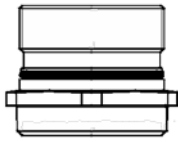
Number of positions		26	28			
Number of contacts		26	28			
Contact dia. (mm Ø)		1	1			
Rated current at 25° (A)		8	8			
Rated voltage (V)		150	150			
Test voltage (V)		1,500	1,500			
Surge voltage category		II	II			
Insulation resistance (Ω)		≥10 ¹²	≥10 ¹²			
Contact resistance (mΩ)		≤3	≤3			

Shielded Connectors M27 Series HC
Shell styles 8, R, 9, F, Q, WIDU, 2, W, H

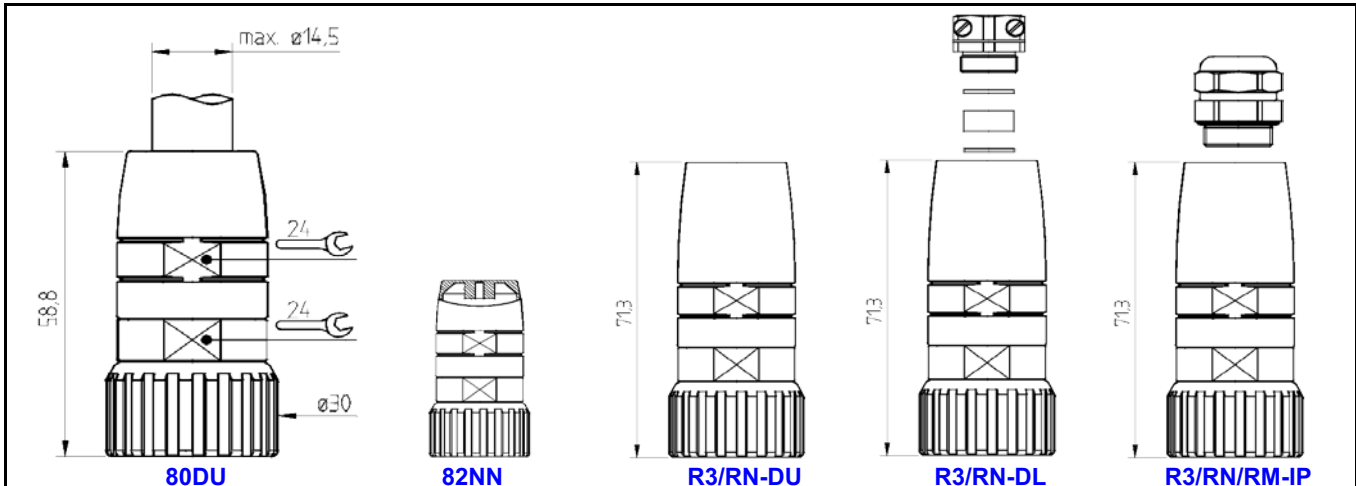
<p>HC-xxxxxxx8xxx page C-P-04</p>	<p>HC-xxxxxxxRxxx page C-P-04</p>	<p>HC-xxxxxxx9xxx page C-P-05</p>
<p>Cable connector, straight with female coupling nut cable entry max. 14 mm universal shielding material</p>	<p>Cable connector, straight with female coupling nut cable entry max. 18 mm universal shielding material</p>	<p>Cable connector, straight with male thread cable entry max. 14 mm universal shielding material</p>
 <p>style 8</p>	 <p>style R</p>	 <p>style 9</p>
<p>HC-xxxxxxxFxxx page C-P-05</p>	<p>HC-xxxxxxxQxxx page C-P-06</p>	<p>HC-xxxxxxxWIDU page C-P-07</p>
<p>Cable connector, straight with male thread cable entry max. 18 mm universal shielding material</p>	<p>Cable connector, straight with male thread cable entry max. 18 mm round flange, rear mount</p>	<p>cable connector, right angled with female coupling nut cable entry max. 14 mm universal shielding material</p>
 <p>style F</p>	 <p>style Q</p>	 <p>style WIDU</p>
<p>HC-xxxxxxx2xxx page C-P-08</p>	<p>HC-xxxxxxxWxxx page C-P-08</p>	<p>HC-xxxxxxxHxxx page C-P-09</p>
<p>Panel connector, straight square flange with 4 holes front mount, gasket with male thread</p>	<p>Panel connector, straight square flange with 4 holes front mount, O-ring with male thread</p>	<p>Panel connector, straight round flange rear mount with male thread</p>
 <p>style 2</p>	 <p>style W</p>	 <p>style H</p>

Shielded Connectors M27 Series HC
Shell styles 4, 5, AAST



<p>HC-xxxxxxx4xxx page C-P-09</p>	<p>HC-xxxxxxx5xxx page C-P-09</p>	<p>HC-AAST23-01 page C-P-10</p>
<p>Panel connector, straight square flange, 4 threads rear mount with male thread</p>	<p>Panel connector, straight square flange, 4 holes rear mount with male thread</p>	<p>front mount, angled square flange, gasket with holes and screws for connectors style 2</p>
<div style="text-align: center;">  <p>style 4</p> </div>	<div style="text-align: center;">  <p>style 5</p> </div>	<div style="text-align: center;">  <p>style AAST23</p> </div>
<p>HC-xxxxxxx6xxx page C-P-11</p>		
<p>Panel connector, straight round flange front mount with male thread</p>		
<div style="text-align: center;">  <p>style 6</p> </div>		

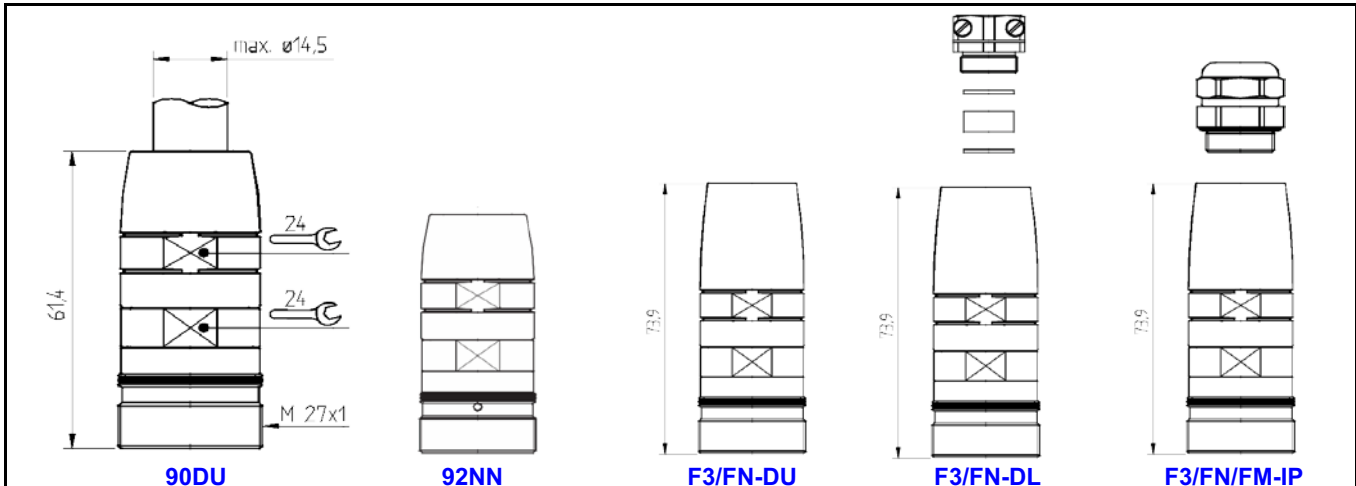
Shielded Connectors M27 Series HC
fits all HC Connectors with male thread
Shell style 8



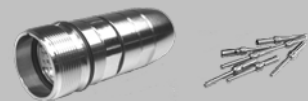
<p>Caps and accessories: pages B-H-01...</p> <p>Mounting tools: pages B-E-01...</p> <p>Assembly instructions: page B-D-10</p> <p>Crimp tools for contacts: pages B-B-01...</p> <p>Crimp contacts: page B-C-10</p> <p>Derating curves: page B-F-01</p>	<p>We also deliver as a connector set. Connector with crimp insert - and the contacts are separate included. Please ask for P/N</p>
---	--

Part Number	HC-	X	X	X	X	X	X	X	X	X	X	X	X	-	X	X
Please fill in the first seven digits of your desired connector insert (26 or 28 positions) See pages B-A-40...B-A-44																
Connector with integrated strain relief and univ. seal ring 3-14.5 mm Ø		8		0		D		U								
Connector with closed endbell for termination purposes		8		2		N		N								
Connectors with integrated strain relief, universal seal ring and.....		R		3		D		U								
endbell without cable gland, open threading PG 13.5		R		3		D		U		-		D		L		
endbell with double lever cable gland PG 13.5 (10-14 mm)		R		3		D		U		-		I		P		
endbell with IP 68 cable gland PG 13.5 (8-13 mm)		R		3		D		U		-		I		P		
endbell without cable gland, open threading PG 16		R		N		D		U								
endbell with double lever cable gland PG 16 (11-15 mm)		R		N		D		U		-		D		L		
endbell with IP 68 cable gland PG 16 (8-14 mm)		R		N		D		U		-		I		P		
endbell without cable gland, open threading M25		R		M		2		5								
endbell with IP 68 cable gland M25 (11-18 mm)		R		M		2		5		-		I		P		

Shielded Connectors M27 Series HC fits all HC Connectors with female coupling nut Shell style 9

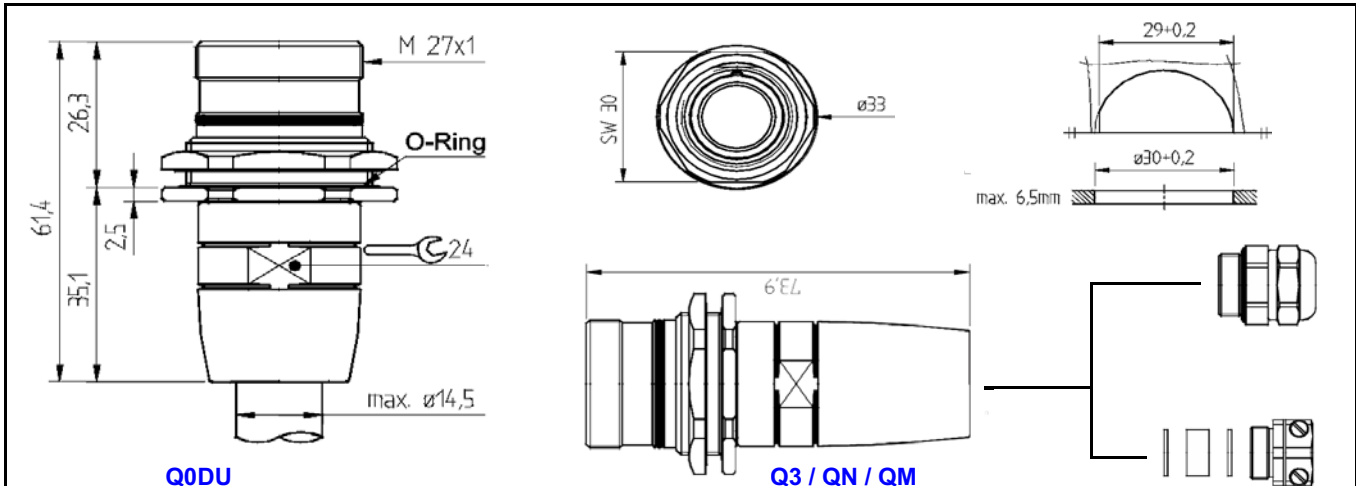


Caps and accessories: pages B-H-01... Mounting tools: pages B-E-01... Assembly instructions: page B-D-10 Crimp tools for contacts: pages B-B-01... Crimp contacts: page B-C-10 Derating curves: page B-F-01	We also deliver as a connector set. Connector with crimp insert - and the contacts are separate included. Please ask for P/N
--	---



Part Number	HC-	X	X	X	X	X	X	X	X	X	X	X	-	X	X
Please fill in the first seven digits of your desired connector insert (26 or 28 positions) See pages B-A-40...B-A-44															
Connector with integrated strain relief and univ. seal ring 3-14.5 mm Ø		9 0 D U													
Connector with closed endbell for termination purposes		9 2 N N													
Connectors with integrated strain relief, universal seal ring and.....															
endbell without cable gland, open threading PG 13.5		F 3 D U													
endbell with double lever cable gland PG 13.5 (10-14 mm)		F 3 D U - D L													
endbell with IP 68 cable gland PG 13.5 (8-13 mm)		F 3 D U - I P													
endbell without cable gland, open threading PG 16		F N D U													
endbell with double lever cable gland PG 16 (11-15 mm)		F N D U - D L													
endbell with IP 68 cable gland PG 16 (8-14 mm)		F N D U - I P													
endbell without cable gland, open threading M25		F M 2 5													
endbell with IP 68 cable gland M25 (11-18 mm)		F M 2 5 - I P													

Shielded Connectors M27 Series HC
fits all HC Connectors with female coupling nut
Shell style Q



- Caps and accessories:** pages B-H-01...
- Mounting tools:** pages B-E-01...
- Assembly instructions:** page B-D-10
- Crimp tools for contacts:** pages B-B-01...
- Crimp contacts:** page B-C-10
- Derating curves:** page B-F-01

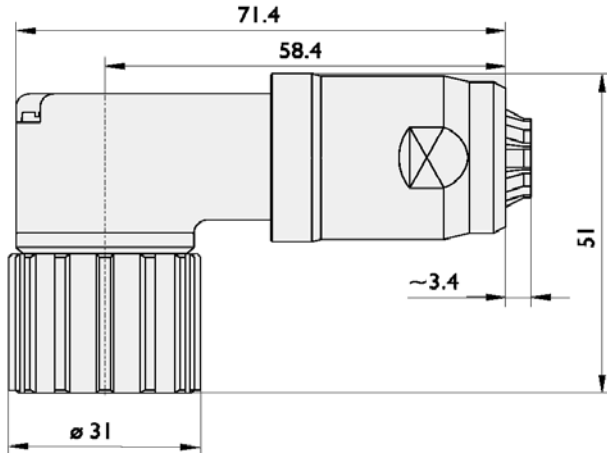
We also deliver as a connector set.
 Connector with crimp insert - and
 the contacts are separate included.
 Please ask for P/N

Part Number	HC-	X	X	X	X	X	X	X	X	X	X	X	X	-	X	X
Please fill in the first seven digits of your desired connector insert (26 or 28 positions) See pages B-A-40...B-A-44																
Connector with integrated strain relief and univ. seal ring 3-14.5 mm Ø		Q 0 D U														
Connectors with integrated strain relief, universal seal ring and.....																
endbell without cable gland, open threading PG 13.5		Q 3 D U														
endbell with double lever cable gland PG 13.5 (10-14 mm)		Q 3 D U - D L														
endbell with IP 68 cable gland PG 13.5 (8-13 mm)		Q 3 D U - I P														
endbell without cable gland, open threading PG 16		Q N D U														
endbell with double lever cable gland PG 16 (11-15 mm)		Q N D U - D L														
endbell with IP 68 cable gland PG 16 (8-14 mm)		Q N D U - I P														
endbell without cable gland, open threading M25		Q M 2 5														
endbell with IP 68 cable gland M25 (11-18 mm)		Q M 2 5 - I P														

CONINVERS®



Shielded Connectors M27 Series HC
fits all HC Connectors with male thread
Shell style WIDU



with integrated strain relief

cable entry 7-14.5 mm

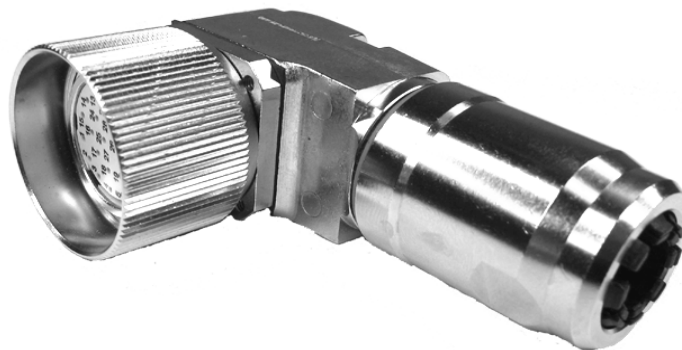
Caps and accessories: pages B-H-01...
 Mounting tools: N/A
 Assembly instructions: page B-D-09
 Crimp tools for contacts: pages B-B-01...
 Crimp contacts: page B-C-10
 Derating curves: N/A

We also deliver as a connector set.
 Connector with crimp insert - and
 the contacts are separate included.
 Please ask for P/N



Part Number	HC-	X	X	X	X	X	X	X	W	I	D	U
-------------	-----	---	---	---	---	---	---	---	---	---	---	---

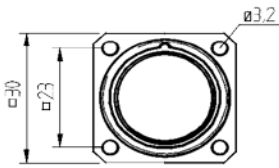
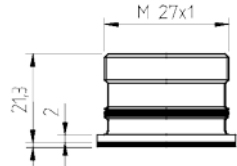
Please fill in the first seven digits of your
 desired connector insert (26 or 28 positions)
 See pages B-A-40...B-A-44



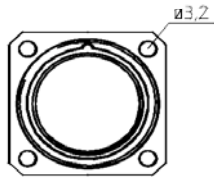
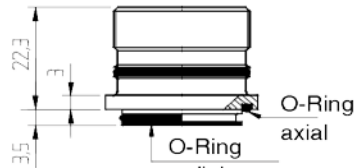
Shielded Connectors M27 Series HC

fits all HC Connectors with female coupling nut

Shell style 2 and W • front mount •

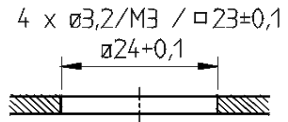


style 2

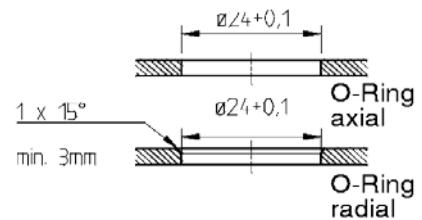


style W

mounting style 2



mounting style W



Caps and accessories:	pages B-H-01...
Mounting tools:	N/A
Assembly instructions:	N/A
Crimp tools for contacts:	pages B-B-01...
Crimp contacts:	page B-C-10
Derating curves:	page B-F-01

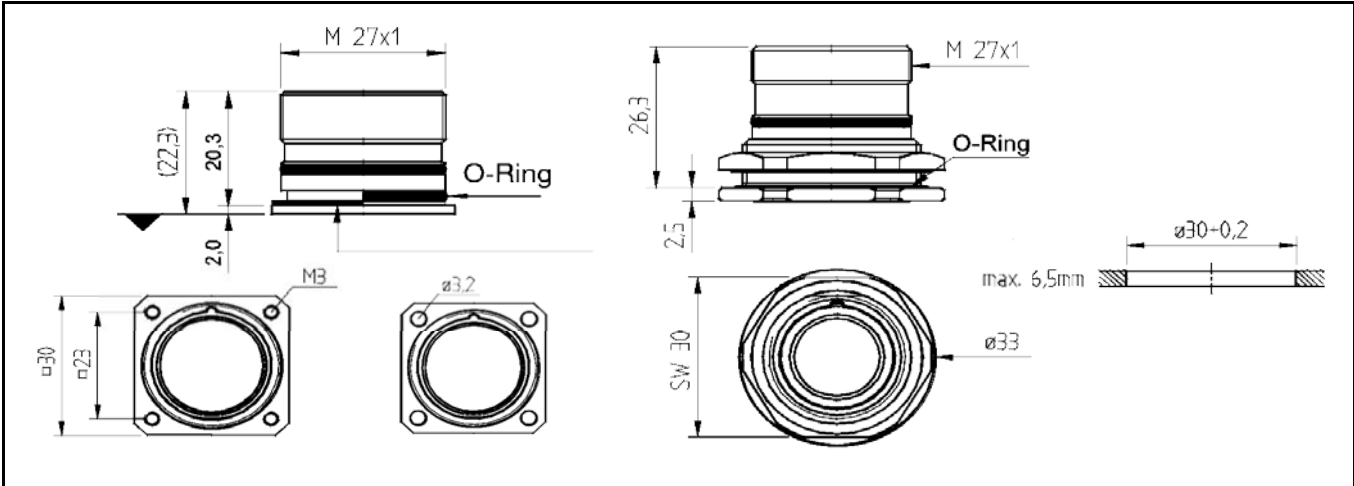
We also deliver as a connector set. Connector with crimp insert - and the contacts are separate included. Please ask for P/N

Part Number	HC-	X	X	X	X	X	X	X	X	X	X	X	
Please fill in the first seven digits of your desired connector insert (26 or 28 positions) See pages B-A-40...B-A-44													
<p>style WA00</p>		<p>2 3 0 0 front mount square flange with gasket 4 holes 3.2 mm Ø</p>											
<p>style 2300</p>		<p>W B 0 0 front mount square flange 4 holes 3.2 mm Ø with radial O-ring</p>											
		<p>W A 0 0 front mount square flange 4 holes 3.2 mm Ø with axial O-ring</p>											

Shielded Connectors M27 Series HC

fits all HC Connectors with female coupling nut

Shell style H, 4, 5 • rear mount •



Caps and accessories: pages B-H-01...
Mounting tools: N/A
Assembly instructions: N/A
Crimp tools for contacts: pages B-B-01...
Crimp contacts: page B-C-10
Derating curves: page B-F-01

We also deliver as a connector set.
 Connector with crimp insert - and the contacts are separate included.
 Please ask for P/N

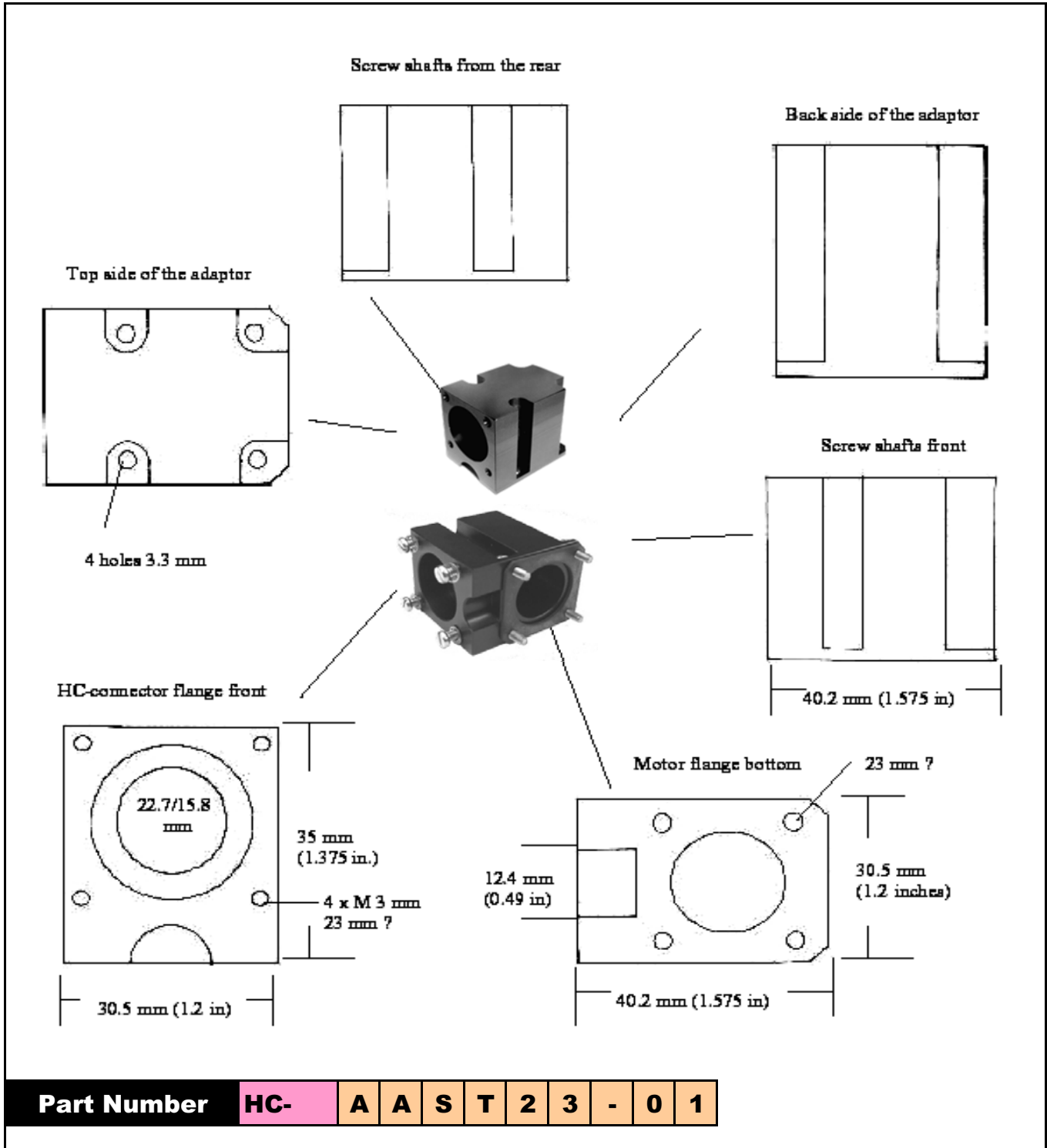
Part Number	HC-	X	X	X	X	X	X	X	X	X	X	X
Please fill in the first seven digits of your desired connector insert (26 or 28 positions) See pages B-A-40...B-A-44												
<p>O-ring</p>		<p>H 0 0 0 rear mount, O-ring axial hex nut from the front round flange</p>										
<p>Gasket</p>		<p>4 1 0 0 rear mount, gasket square flange 4 threads M3</p>										
<p>style 5100</p>		<p>4 3 0 0 rear mount, O-ring radial square flange 4 threads M3</p>										
<p>style H000</p>		<p>5 1 0 0 rear mount, gasket square flange 4 holes 3.2 mm Ø</p>										
		<p>5 3 0 0 rear mount, O-ring radial square flange 4 holes 3.2 mm Ø</p>										

CONINVERS®



Adaptor for HC Connectors M27
fits HC-xxxxxxx2300

- front mount •



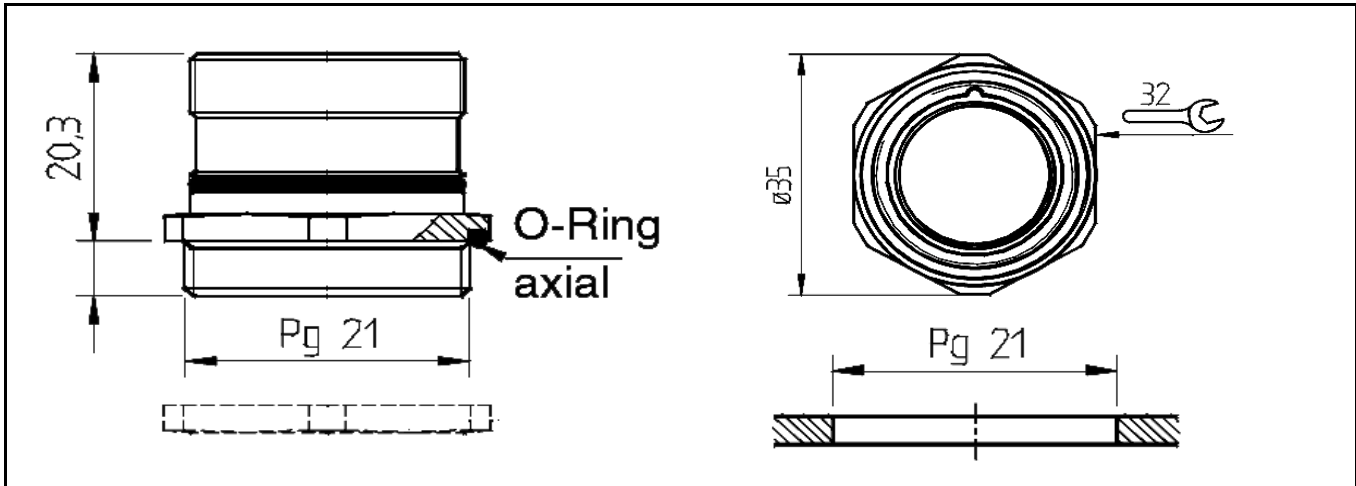
CONINVERS®



Shielded Connectors M27 Series HC

fits all HC Connectors with female coupling nut

Shell style 6 • front mount •



Caps and accessories: pages B-H-01...
Mounting tools: N/A
Assembly instructions: N/A
Crimp tools for contacts: pages B-B-01...
Crimp contacts: page B-C-10
Derating curves: page B-F-01

We also deliver as a connector set.
 Connector with crimp insert - and
 the contacts are separate included.
 Please ask for P/N

Part Number	HC-	X	X	X	X	X	X	X	6	X	X	X	
-------------	-----	---	---	---	---	---	---	---	----------	---	---	---	--

Please fill in the first seven digits of your
 desired connector insert (26 or 28 positions)
 See pages B-A-40...B-A-44



style 6300



style 6LNU

3 0 0	thread length 6 mm brass, nickel, w/o nut
3 N U	thread length 6 mm brass, nickel, with hex nut
L 0 0	thread length 10 mm brass, nickel, w/o nut
L N U	thread length 10 mm brass, nickel, with hex nut
S N U	thread length 10 mm stainless steel, w. hex nut