



Shell material

Machined components: Aluminum, anodized

Cable entry: max. 36 mm

Insulator

Connector inserts: Polyamide (PA66) UL 94 V0

Contacts

Contact material: Copper-Zinc alloy (CuZn)
 Contact plating power and PE: silver plated (Ag)
 Contact plating signal: gold plated (Au)
 Contact termination: crimp type

Sealing

Sealing rings: Fluor rubber FPM
 Gaskets: Fluor rubber FPM

Temperature

Temperature (long term) Celsius: - 20 °C up to + 125°C
 Temperature (long term) Fahrenheit: - 4 °F up to + 257 °F

Mating

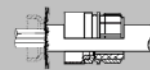
Mating cycles: Standard min. 50
 Female coupling nuts: M58 screw locking
 Male receptacles: M58 screw locking

Protection

Protection class : IP 67 (mated) depends on which cable gland is used



All connectors with different shielding material for different jacket and shield diameters.



EMC
shielding

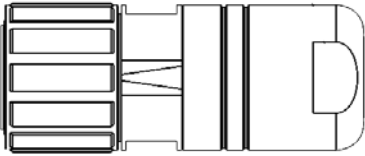
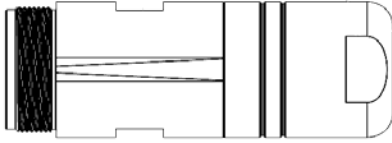


	6	8			
Number of positions	6	8			
Number of contacts	2 + 3 + PE	4 + 3 + PE			
Contact dia. (mm Ø)	1.6 + 10 + 10	1.6 + 10 + 10			
Rated current at 25° (A)	12/150	12/150			
Rated voltage (V)	250/630	250/630			
Test voltage (V)	4,000/6,000	4,000/6,000			
Surge voltage category	III	III			
Installation altitude above sea level	2,000 m	2,000 m			

CONINVERS®

Shielded Power Connectors M58 Series SL Shell styles 8, 9

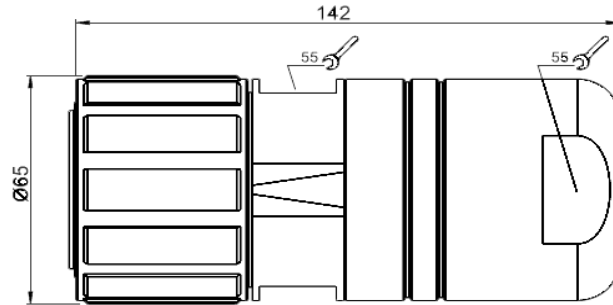


SL-xxxxxxx8xxx page C-R-03	SL-xxxxxxx9xxx page C-R-04	
Cable connector, straight with female coupling nut cable entry max. 36.0 mm universal shielding material	Cable connector, straight with male thread cable entry max. 36.0 mm universal shielding material	
 <p style="text-align: center;">style 8</p>	 <p style="text-align: center;">style 9</p>	

CONINVERS®

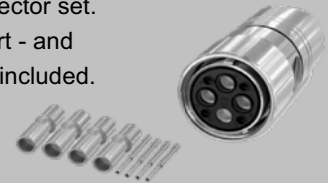




Shielded Power Connectors M58 Series SL
fits all SL Connectors with male thread
Shell style 8



Caps and accessories: pages B-H-06...B-H-07
Mounting tools: N/A
Assembly instructions: page B-D-30
Crimp tools for contacts: pages B-B-03...
Crimp contacts: pages B-C-60...
Derating curves: page B-F-03

We also deliver as a connector set.
 Connector with crimp insert - and
 the contacts are separate included.
 Please ask for P/N



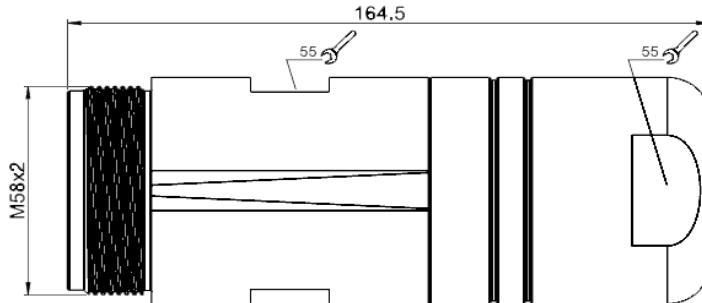
Part Number	SL-	X	X	X	X	X	X	X	X	X	X	X
6 pos. (2+3+PE) female		5	E	S	1	N	8	A				
8 pos. (4+3+PE) female		7	E	S	1	N	8	A				
Please fill in the P/N of your desired connector crimp insert without contacts.												
Connectors with integrated strain relief, and....												
seal ring for cable diameters from 17.0 up to 25.0 mm									8	0	0	2
seal ring for cable diameters from 25.0 up to 36.0 mm									8	0	0	1



CONINVERS®



Shielded Power Connectors M58 Series SL
fits all SL Connectors with female coupling nut
Shell style 9



Caps and accessories: pages B-H-06...B-H-07
Mounting tools: N/A
Assembly instructions: page B-D-30
Crimp tools for contacts: pages B-B-03...
Crimp contacts: pages B-C-60...
Derating curves: page B-F-03

We also deliver as a connector set.
 Connector with crimp insert - and
 the contacts are separate included.
 Please ask for P/N

Part Number	SL-	X	X	X	X	X	X	X	X	X	X	X	
6 pos. (2+3+PE) male		5	E	P	1	N	8	A					
8 pos. (4+3+PE) male		7	E	P	1	N	8	A					
Please fill in the P/N of your desired connector crimp insert without contacts.													
Connectors with integrated strain relief, and....													
seal ring for cable diameters from 17.0 up to 25.0 mm										9	0	0	2
seal ring for cable diameters from 25.0 up to 36.0 mm										9	0	0	1

